

Product Brochure For V0926

## 150mm Steel Offset Fabricated Bench Vice - OSV-150

Right Hand Offset  
178mm Jaw Opening

**On Sale**

Ex GST

~~\$282.00~~

**\$209.57**

Inc GST

~~\$324.30~~

**\$241.00**



ORDER CODE:	V0926
Model:	OSV-150
Type:	Offset - Right Hand
Jaw Width (mm):	150
Jaw Height:	24
Jaw Opening (mm):	178
Overall Length (Closed Jaws) (mm):	470.5
Overall Width (mm):	275.4
Overall Height (mm):	194.5
Clamping Force (KN):	35
Nett Weight (kg):	22.1



### Description

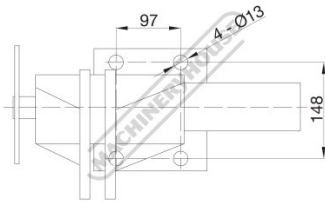
Fabricated from heavy steel plate and designed for heavy duty work, includes a handy in-built anvil.

### Features

- Right hand offset design
- In-built anvil
- Hardened serrated jaws
- Double start nut for higher clamping force

Product Brochure For V0926

**Specific Features**



Base Dimensions

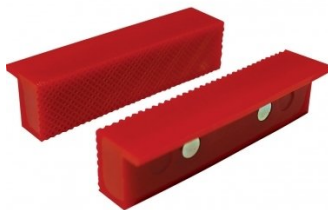
**Recommended Accessories**

V054  
Plastic Magnetic Soft Jaws

V0544  
Plastic Magnetic Soft Jaws

V053  
Aluminium Magnetic Soft Jaws

V0537  
Aluminium Magnetic Soft Jaws



V0534  
Aluminium Magnetic Soft Jaws

V050  
Vice Brake Bender - Suits Bench Vices

