

Product Brochure For V0928

## 200mm Steel Offset Fabricated Bench Vice - OSV-200

Right Hand Offset  
228mm Jaw Opening

**On Sale**

Ex GST

Inc GST

~~\$550.00~~

~~\$632.50~~

**\$407.83**

**\$469.00**



ORDER CODE:	V0928
Model:	OSV-200
Type:	Offset - Right Hand
Jaw Width (mm):	200
Jaw Height:	31.75
Jaw Opening (mm):	228
Overall Length (Closed Jaws) (mm):	606
Overall Width (mm):	354
Overall Height (mm):	236
Clamping Force (KN):	60
Nett Weight (kg):	39



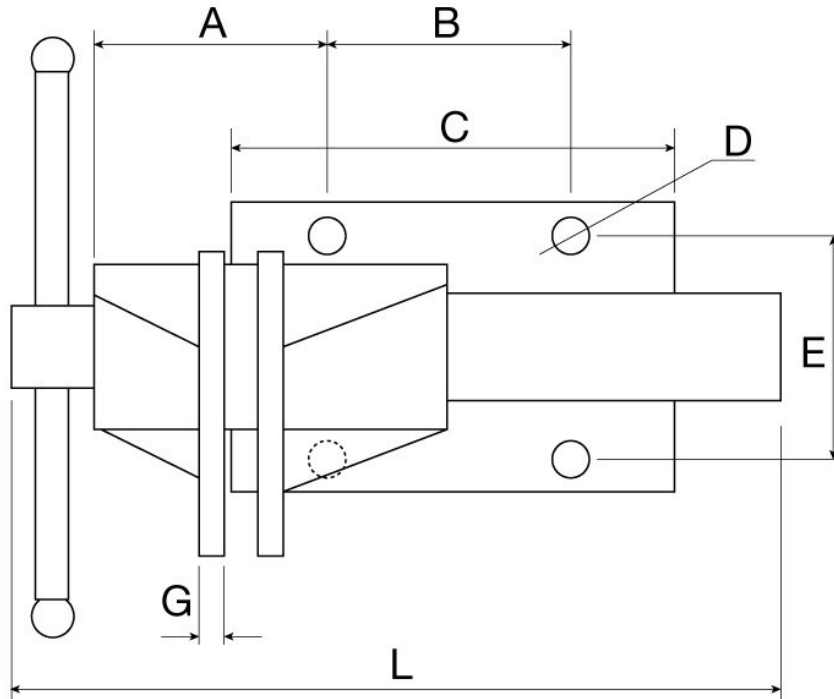
### Description

Fabricated from heavy steel plate and designed for heavy duty work, includes a handy in-built anvil.

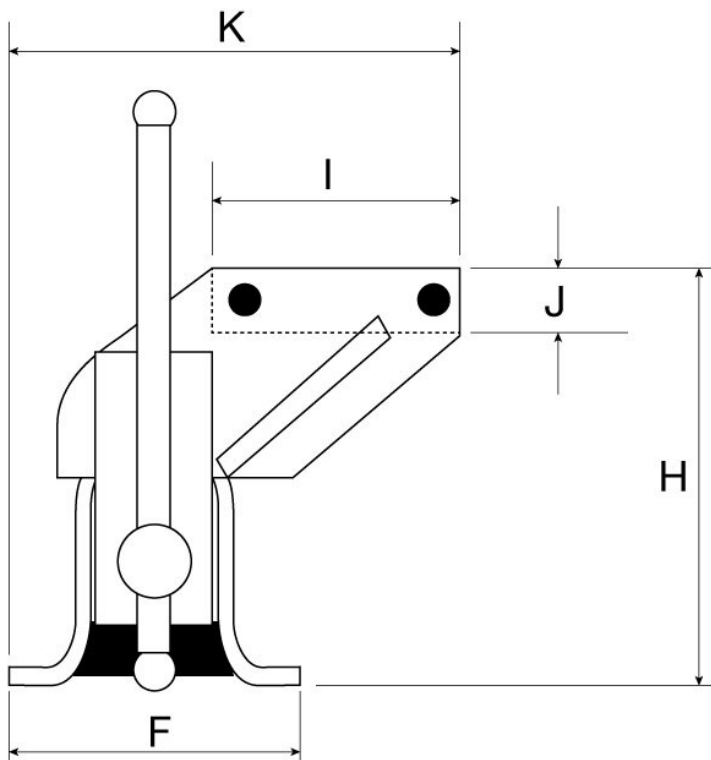
### Features

- Right hand offset design
- In-built anvil
- Hardened serrated jaws
- Double start nut for higher clamping force

Product Brochure For V0928

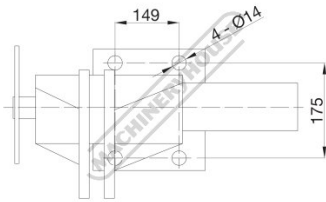


	A	B	C	D	E	F	G	H	I	J	K	L	Jaw Opening
<b>OSV-100</b>	83.3	50	80	Ø10.5	95	117	9.4	135	100	19.05	181.5	319	127
<b>OSV-125</b>	89.5	79	100	Ø10.5	127	148	12	160.4	125	24	231.1	369	150
<b>OSV-150</b>	112.5	97	150	Ø13	148	183	12	194.5	150	24	275.4	470.5	178
<b>OSV-200</b>	140.8	149	199	Ø14	175	210	15.9	236	203.7	31.75	354	606	228



## Product Brochure For V0928

### Specific Features



### Base Dimensions

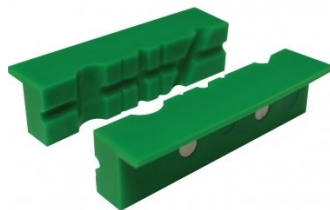
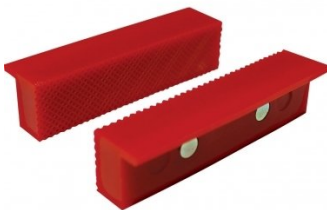
### Recommended Accessories

V054  
Plastic Magnetic Soft Jaws

V0544  
Plastic Magnetic Soft Jaws

V053  
Aluminium Magnetic Soft Jaws

V0537  
Aluminium Magnetic Soft Jaws



V0534  
Aluminium Magnetic Soft Jaws

V050  
Vice Brake Bender - Suits  
Bench Vices

