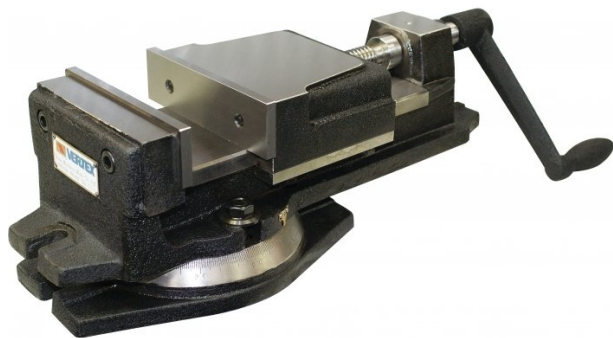


Product Brochure For V106

## Vertex K-Type Milling Vice - VK-6

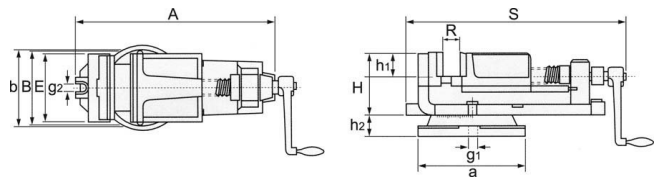
152mm Jaw Width  
112mm Jaw Opening



Save now

Ex GST	Inc GST
<del>\$392.00</del>	<del>\$450.80</del>
<b>\$312.17</b>	<b>\$359.00</b>

ORDER CODE:	V106
MODEL:	VK-6
E - Jaw Width (mm):	152
R - Jaw Opening (mm):	112
h1 - Jaw Depth (mm):	40
A (mm):	421
B (mm):	160
H (mm):	105
S (mm):	462
a (mm):	245
b (mm):	175
h2 (mm):	40
g1 (mm):	16
g2 (mm):	16
Nett Weight (kg):	30



### Features

- Jaws hardened and ground alloy steel
- All working surfaces, such as top and bottom of bed, jaw plates and base, are precision ground square and parallel
- Bearing portion of the acme-threaded leadscrew is ground for accurate alignment
- Graduated swivel base with large, easy-to-read divisions

Product Brochure For V106

---

**Specific Features**



Rear View



Shown without Handle

**Recommended Accessories**

V0532

Aluminium Magnetic Soft Jaws



V0539

Aluminium Magnetic Soft Jaws



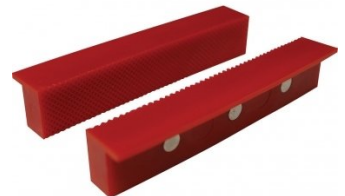
V0536

Aluminium Magnetic Soft Jaws



V0542

Plastic Magnetic Soft Jaws



V0546

Plastic Magnetic Soft Jaws

