

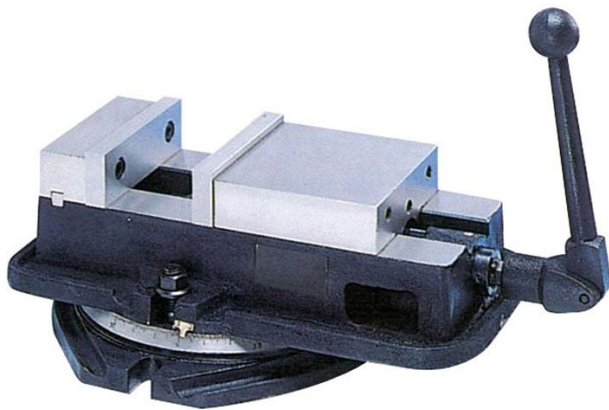
Product Brochure For V306

Vertex Anglock Machine Vice - VA-6

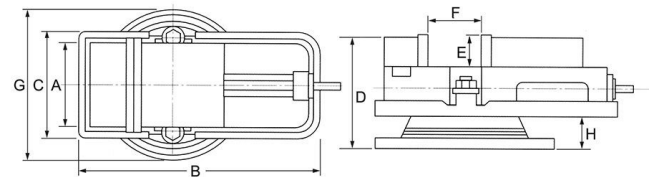
152mm Jaw Width
154mm Jaw Opening

On Sale

| | |
|---------------------|---------------------|
| Ex GST | Inc GST |
| \$598.00 | \$687.70 |
| \$479.13 | \$551.00 |



| | |
|-----------------------|------|
| ORDER CODE: | V306 |
| MODEL: | VA-6 |
| A - Jaw Width (mm): | 152 |
| F - Jaw Opening (mm): | 142 |
| E - Jaw Depth (mm): | 46 |
| B (mm): | 425 |
| C (mm): | 209 |
| D (mm): | 149 |
| G (mm): | 300 |
| H (mm): | 38 |
| Nett Weight (kg): | 45 |



Description

The VERTEX Anglock vice has a ductile steel body with hardened and ground movable steel jaw.

Features

- All surfaces are precision ground and the bed is flame hardened
- Spherical segment allows for all directional alignment
- When clamping, a downward pressure of 1kg is exerted by the movable jaw for every 2kg of clamping pressure, preventing the work piece from tilting
- Bearing thrust collar cuts friction and increases clamping pressure
- Swivel base is graduated to 360°

Product Brochure For V306

Recommended Accessories

V0532

Aluminium Magnetic Soft Jaws

V0539

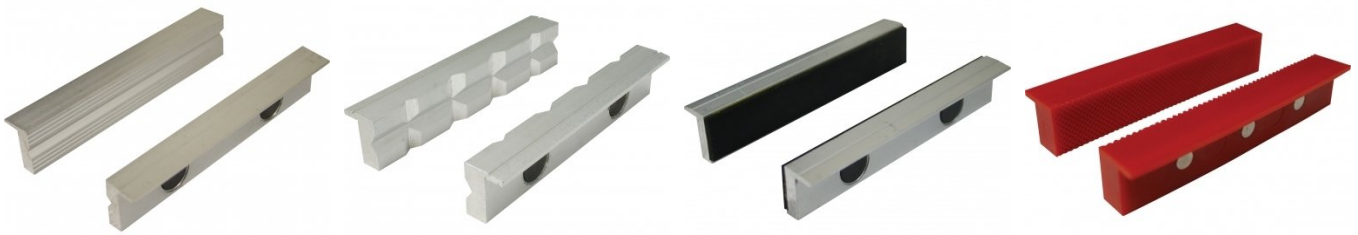
Aluminium Magnetic Soft Jaws

V0536

Aluminium Magnetic Soft Jaws

V0542

Plastic Magnetic Soft Jaws



V0546

Plastic Magnetic Soft Jaws

