

Product Brochure For W1071

## Switchable Multi-Angle Welding Magnet - WCM-90HD

45° & 90° Degrees  
40kg Pull Force

**On Sale**

Ex GST

Inc GST

~~\$56.00~~

~~\$64.40~~

**\$41.74**

**\$48.00**



ORDER CODE:	W1071
MODEL:	WCM-90HD
Type:	Switchable Multi-Angle Welding Magnet
Size:	95L x 110H x 26Wmm
Quantity Per Pack (No.):	1
Magnet Clamp Angle (deg):	45°, 90°
Pull Force (kg):	40
Nett Weight (kg):	0.68



### Description

Multi-Angle welding magnetic tool for use in the workshop & or on site.

With the added benefit of a convenient on/off switch you can securely hold material while providing you with an unobstructed area for tack welds. Use the outer edges of the corner magnet for setting up materials at 45° & 90°.

### Features

- Powerful magnet complete with on/off switch
- Multi-Angle 45° & 90°
- Ideal for square tubing, angle and flat stock
- Easy to clean, simply turn off and wipe
- 40kg Max force
- \*Magnetic force is based on the longest side of Magnet with 10mm thick steel

Product Brochure For W1071

**Specific Features**



Shown Set Up in 45 Degrees



Shown Set Up in 90 Degrees



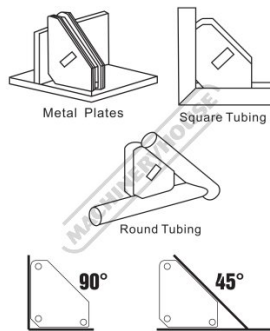
Shown Clamping Round Tube



Shown with Optional Larger Mag Switch W1072

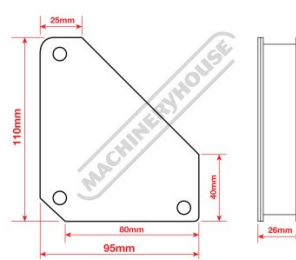


Front View



2 Angles 45 and 90 Degrees

**WCM-90HD - Dimensions**



Dimensions

**Recommended Accessories**

W1072  
Switchable Multi-Angle Welding Magnet

W1085  
Switchable Multi-Angle Welding Magnet

W1086  
Switchable Multi-Angle Welding Magnet

W1081  
Multi Angle Corner Magnets - 2pc Pack



Product Brochure For W1071

---

W1082

Multi Angle Corner Magnets -  
2pc Pack



W1091

Magnetic Swivel V-Pad Clamps

