

Product Brochure For W1105

Weldtech MST140i 140A Gas/Gasless MIG/TIG/ARC Inverter Welder - MST140i  
140A



**On Sale**

<b>Ex GST</b>	<b>Inc GST</b>
<b>\$348.00</b>	<b>\$400.20</b>
<b>\$303.48</b>	<b>\$349.00</b>

ORDER CODE:	W1105
MODEL:	MST140i
Type:	MIG/TIG/ARC & Inverter Welder
Part Number:	~
Voltage (V):	230
Recommended Plug Amperage (amp):	15
Welding Current Range - MIG (amp):	40 - 200
Welding Current Range - STICK (amp):	10 - 160
Welding Current Range - TIG (amp):	~
Duty Cycle (% @ amp):	25 @ 200
Wire Spool Size (kg):	5
Ferrous Wire Size - Range (mm):	~
Stainless Steel Wire Size - Range (mm):	~
Aluminium Wire Size - Range (mm):	~
Recommended Generator (KVA):	8
Dimensions (mm):	550 x 215 x 415
Nett Weight (kg):	6.5



**Description**

Weighing 6.5kg, the MST140i offers a complete welding setup with a 140A output for up to 5mm steel in MIG mode. It includes essentials like a torch, leads, and a spool of gasless wire. Features include synergic controls with LCD display, and capabilities for MIG, ARC and TIG welding, along with advanced adjustment options.

Powerful- 130A @ 30% MIG; 120 @ 30% ARC; 120A @ 35% TIG - welds up to 5mm mild steel  
 Portable- At 6.5kg, this machine is very lightweight and easy to move around  
 Reliable- Features cutting-edge IGBT Inverter Technology

**Features**

- Ready to weld with gasless MIG &/or Arc
- Takes 1kg D100 mini-spools
- Very easy-to-use synergic MIG controls
- Digital read-out displays
- Compact, robust and lightweight
- Arc Force adjustment & built-in Hot Start
- Comes with 10A plug - perfect for home or workshop power supply

**Includes**

- 2m Binzel MIG torch
- 2m Earth lead
- 2m Arc lead,
- Hand-held welding mask
- Premium welding gloves
- Chipping hammer/brush
- Mig wire
- Drive rollers

Product Brochure For W1105

---

**Specific Features**



Kit

**Recommended Accessories**

W1105N  
Consumable Mig Welder Starter Pack



W10362  
Magnetic MIG Torch Rest



O0181  
MAP-PRO Gas Disposable Cylinder



O0182  
O2 - Oxygen Disposable Cylinder



O352  
Gas Refillable Cylinder



O354  
Gas Refillable Cylinder



O360  
Gas Refillable Cylinder



O362  
Gas Refillable Cylinder



Product Brochure For W1105

O366  
Gas Refillable Cylinder



O368  
Gas Refillable Cylinder



W1140D  
Argon Gas Regulator-Twin Gauge



W001  
Auto Darken Welding Helmet - 9-13 Shade



W002  
Auto Darken Welding Helmet - 9-13 Shade



W1090  
Auto Darken Welding Helmet - 9 ~ 13 Shade



W1091  
Magnetic Swivel V-Pad Clamps



W1092  
Auto Darken Welding Helmet with PAPR Respiratory System - (2.5) 8 ~ 12 Shade



W100  
ROGUE™ Heavy Duty Welding Gloves - 400mm



W1140E  
Ø0.8mm Mild Steel MIG Welding Wire



W1140I  
Ø0.8mm Mild Steel MIG Welding Wire



W1140F  
Ø0.9mm Mild Steel MIG Welding Wire



Product Brochure For W1105

---

**W1140J**  
Ø0.9mm Mild Steel MIG  
Welding Wire



**W1140K**  
Ø1.0mm Mild Steel MIG  
Welding Wire



**W1140L**  
Ø1.2mm Mild Steel MIG  
Welding Wire



**W1140G**  
Ø0.8mm Gasless Mild Steel  
MIG Welding Wire



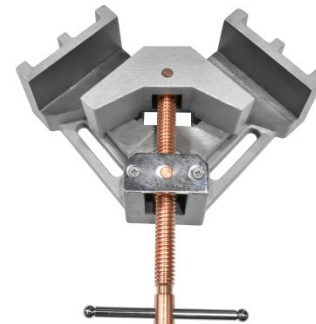
**W1140H**  
Ø0.9mm Gasless Mild Steel  
MIG Welding Wire



**V099**  
90 degree Angle Vice Clamp



**V100**  
90 degree Angle Vice Clamp



**W270**  
Welding Fume Extractor

