

Product Brochure For W1115

Synergic Inverter SWF - MIG/TIG/STICK WELDER - ADVANCEMIG 500WC

Water-Cooled Trolley Package Complete
500 Amps Welding Current

On Sale - Back In Stock Soon



Ex GST	Inc GST
\$6,994.00	\$8,043.10
\$6,637.39	\$7,633.00

ORDER CODE:	W1115
MODEL:	ADVANCEMIG 500WC
Type:	MIG / TIG / STICK & Multifunction SWF Welder
Part Number:	~
Voltage (V):	415
Recommended Plug Amperage (amp):	32
Welding Current Range - MIG (amp):	40 - 500
Welding Current Range - STICK (amp):	40 - 500
Welding Current Range - TIG (amp):	~
Duty Cycle (% @ amp):	60 @ 500
Wire Spool Size (kg):	15
Ferrous Wire Size - Range (mm):	~
Stainless Steel Wire Size - Range (mm):	~
Aluminium Wire Size - Range (mm):	~
Recommended Generator (KVA):	~
Dimensions (mm):	1050 x 440 x 1450
Nett Weight (kg):	110



Description

State of the art synergic technology with full operational controls on the remote wire feeder makes this model a breeze to operate. Rich in features including a 4 roll wire feeder and integrated protection systems mean this 3 phase machine is top of the class in performance, reliability and user satisfaction. With damage resistant industrial casing and front panel protection this machine is designed for heavy work day in and day out. Complete with heavy duty industrial welding trolley, watercooler unit and water-cooled wire feeder.

Features

- Intelligent digital wire feeder with all MIG controls and display located on wire feeder control panel
- Digital microprocessor control system for superior & dynamic arc characteristics
- Optional integrated heavy duty industrial trolley with storage compartment option
- Optional extended 10m interconnect cable
- Modular power source can be used individually for MMA, arc air gouging and lift TIG welding
- Synergic mig operation for optimum welding results every time
- Lift TIG operation with down slope and remote current control
- MIG waveform (inductance) control for great arc control and smoother welding results
- Damage resistant Industrial casing with front panel protection
- Wire inching and gas purge control
- Safe and simple set up and easy to use
- Adjustable pre flow, post flow, burn back and soft start settings
- 2T/4T trigger operation with crater control settings
- Adjustable arc force, hot start & automatic anti stick control
- Dual digital display meters for accurate pre setting and feedback of welding parameters & output
- Power source wind tunnel cooling construction
- Protection against environmental contamination

Includes

- Water cooled trolley
- 3m Interconnecting Cable
- 3m Earth Lead with HD earth clamp
- 4m MMA lead with HD twist lock electrode holder Torch
- NZ/Australia Argon Gas Regulator
- NZ/ Australia Argon Regulator/CO2 Cylinder Adaptor
- 4m Gas Hose, Gas Inlet Quick Connector, Gas Hose Clamp x2

Product Brochure For W1115

- Wire Drive Roller 0.8/0.9mm 'v' groove x2
- Wire Drive Roller 1.0/1.2mm 'v' groove x2
- Wire Drive Roller 1.2/1.6mm flux cored x2

Recommended Accessories

W10362
Magnetic MIG Torch Rest



O0181
MAP-PRO Gas Disposable
Cylinder



O0182
O2 - Oxygen Disposable
Cylinder



O352
Gas Refillable Cylinder



O354
Gas Refillable Cylinder



O360
Gas Refillable Cylinder



O362
Gas Refillable Cylinder



O366
Gas Refillable Cylinder



Product Brochure For W1115

O368
Gas Refillable Cylinder



W1140D
Argon Gas Regulator-Twin Gauge



W001
Auto Darken Welding Helmet - 9~13 Shade



W002
Auto Darken Welding Helmet - 9~13 Shade



W1090
Auto Darken Welding Helmet - 9 ~ 13 Shade



W1091
Magnetic Swivel V-Pad Clamps



W1092
Auto Darken Welding Helmet with PAPR Respiratory System - (2.5) 8 ~ 12 Shade



W100
ROGUE™ Heavy Duty Welding Gloves - 400mm



W1140E
Ø0.8mm Mild Steel MIG Welding Wire



W1140I
Ø0.8mm Mild Steel MIG Welding Wire



W1140F
Ø0.9mm Mild Steel MIG Welding Wire



W1140J
Ø0.9mm Mild Steel MIG Welding Wire



Product Brochure For W1115

W1140K
Ø1.0mm Mild Steel MIG
Welding Wire



W1140L
Ø1.2mm Mild Steel MIG
Welding Wire



W1140G
Ø0.8mm Gasless Mild Steel
MIG Welding Wire



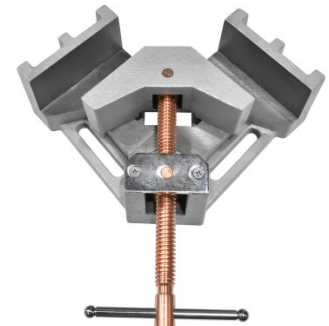
W1140H
Ø0.9mm Gasless Mild Steel
MIG Welding Wire



V099
90 degree Angle Vice Clamp



V100
90 degree Angle Vice Clamp



W270
Welding Fume Extractor

