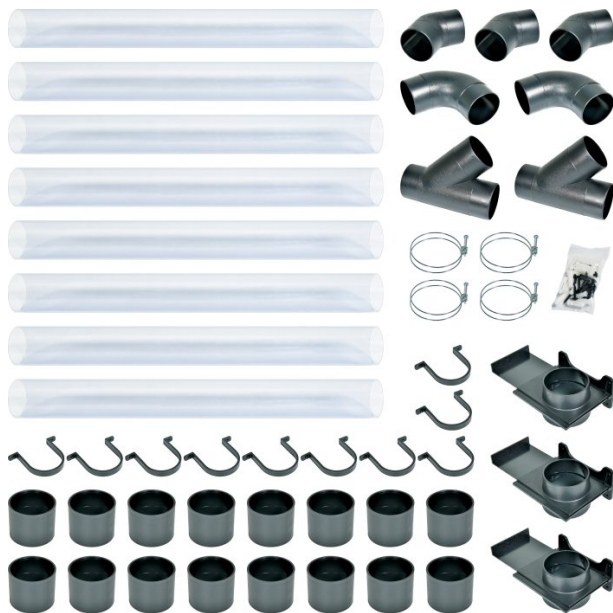


Product Brochure For W3447

## Wall Mounted Wood Dust Extraction Ducting Kit - DCK-200W

Ø100mm (4")



**On Sale**

Ex GST	Inc GST
<del>\$366.00</del>	<del>\$420.90</del>
<b>\$286.96</b>	<b>\$330.00</b>

ORDER CODE:	W3447
MODEL:	DCK-200W
Type:	Wall Mounted Dust Extraction Kit
Application:	Timber
Size:	Ø100mm Attachments
Suits:	All Wood Dust Collectors
Nett Weight (kg):	12.5



### Description

This Ø100mm wall mounted ducting kit is the ideal solution to getting your dust collection hose off the floor.

All parts clip together for fast assembly and a good range of components are included to connect up to 3 machines to a dust extractor.

### Includes

- 8 x 915mm lengths of Ø100mm clear tubing
- 3 x 100mm wall mount blast gates
- 3 x 100mm 45° elbows
- 2 x 100mm 90° elbows
- 2 x 100mm "Y" connectors
- 16 x 100mm Joiners
- 4 x 100mm hose clamps
- 10 x Tube hanging brackets and mounting hardware

#### Please Note:

- We strongly recommend that you "Earth" this ducting kit to each piece of equipment and the dust collector itself to minimise the risk of static build-up that can result in fire.

Product Brochure For W3447

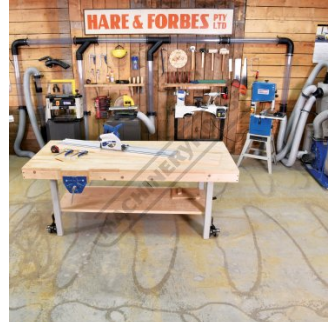
**Specific Features**



Shown Setup and Kit Components



Quantity Per Piece in Kit



Shown Set Up with Optional Machines and Accessories



Shown Set Up with Optional Dust Hose and Access



8 x 915mm Lengths of 100mm Clear Tubing



10 x Tube Hanging Brackets Top View



3 x 45 Degree Elbows Top View



2 x 90 Degree Elbows Top View



16 x Joiners Top View



3 x Wall Mount Blast Gates Open



2 x Y Connectors Top View



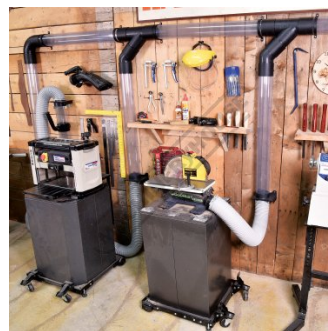
4 x Hose Clamps



Fixing Accessories



Shown Set Up With Optional Dust Collector

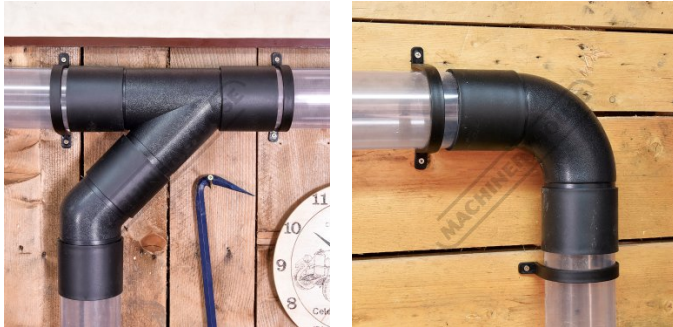


Shown Set Up With Optional Accessories



Gate in Open Position

Product Brochure For W3447



Y Connector Joined to 45 Degree Elbow 90 Degree Elbow

**Recommended Accessories**

**W3448**  
Wood Dust Extraction Ducting



**W3445**  
Wall Mounted Wood Dust Extraction Accessory Kit



**W344**  
Wood Dust Accessory Kit



**W322A**  
Flame Retardant Dust Hose - Metal or Timber



**W3405**  
Dust Hose Clamp



**W340**  
Dust Hose Clamp



**W341**  
Dust Hose Clamp



**W334A**  
Dust Hose Stepped Reducer



Product Brochure For W3447

W3346  
Dust Hose Stepped Reducer



W334B  
Dust Hose Joiner



W3395  
Quick Connect Adaptor



W333  
Dust Hose Reducer



W335  
Blast Gate



W336  
Dust Hose Elbow - 90 Degree



W337  
Dust Hose Y Adaptor



W3375  
Dust Hose Y Adaptor



W334  
Dust Hose Reducer



W338  
Dust Hose Universal Dust Hood



W339  
Dust Hose Floor Sweeper Attachment



W338A  
Wood Lathe - Dust Chute Hood Attachment



## Product Brochure For W3447

---

W338B

Wood Lathe - Dust Chute - Big  
Gulp

